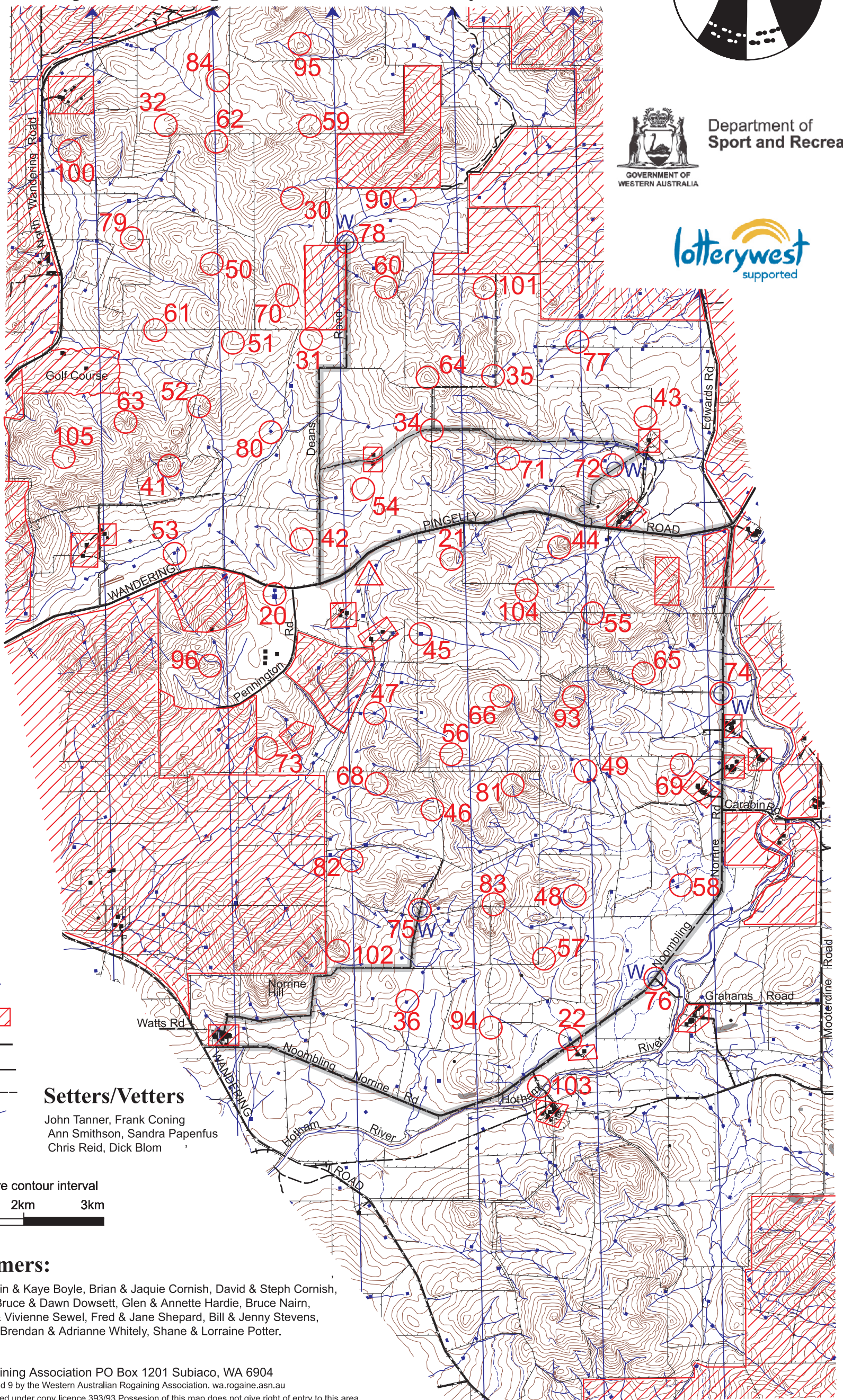


Mooterdine Moonlight Meander

The Western Australian Rogaining Association
Upsidedown Rogaine 4th and 5th February 2012



Department of Sport and Recreation



LEGEND

- Building
- Control 50
- Contours
- Farm Dam
- Hash House
- Magnetic North Line
- Out of Bounds
- Road Sealed
- Road Gravel
- Track
- Watercourse
- Water Drop W

Setters/Vetters

John Tanner, Frank Coning
Ann Smithson, Sandra Papenfus
Chris Reid, Dick Blom

SCALE 1:50,000, 5 metre contour interval
0 1km 2km 3km

Thanks to Farmers:

Adam & Judith Brown, Colin & Kaye Boyle, Brian & Jaquie Cornish, David & Steph Cornish, Murray & Cathy Cornish, Bruce & Dawn Dowsett, Glen & Annette Hardie, Bruce Nairn, Greg Schouten, Maurice & Vivienne Sewel, Fred & Jane Shepard, Bill & Jenny Stevens, Dean & Diane Warburton, Brendan & Adrianne Whitely, Shane & Lorraine Potter.

Mooterdine Midnight Meander WARA Upside Down Rogaine 4th & 5th February 2012

No.	Description	Points	No.	Description	Points	Important Information
20	Between the Dams	20	68	'A' Water Course Junction	60	
21	The Knoll	20	69	The Spur	60	
22	The Dam - NE Side	20				Control Cards
			70	The Spur	70	From 1930 Saturday
30	The Spur	30	71	The Watercourse Junction	70	
31	'A' Knoll	30	72	'A' Knoll - Water Drop	70	Briefing
32	Head of the Gully	30	73	The Spur	70	1950 Saturday
34	The Fence Inters. - 50m @ 162 deg	30	74	The Road/Track Intersection - (On a Fence) - Water Drop	70	
35	The Dam - East Side	30	75	The Fence Corner - 40m @ 360 deg - Water Drop	70	Start
36	The Dam - Nth Side	30	76	The Road Intersection - 85m @ 97 deg Water Drop	70	2000 Saturday
			77	The Water Course	70	
41	The Knoll	40	78	The Road End - 45m @ 40 deg - Water Drop	70	Finish
42	The Spur - SW side	40	79	The Knoll	70	0800 Sunday
43	The Broad Spur	40				
44	The Spur	40	80	The Dam - 30m @ 80 deg	80	Hash House
45	The Dam - Nth Side	40	81	Head of the Gully	80	Opens at approx 0630 Sun
46	The Knoll	40	82	The Water Course Junction - 50m @ 180 deg	80	Closes about 0900Sun
47	'A' Water Course Junction	40	83	Head of the Gully	80	
48	The Spur	40	84	The Spur	80	Sunset
49	The Water Course	40				- Saturday 1915
			90	The Dam - Nth Side	90	Sunrise
50	The Saddle	50	93	Head of the Gully	90	Sunday 0539
51	The Spur	50	94	'A' Lone Wandoo (tree)	90	
52	Head of the Water Course	50	95	The Knoll	90	
53	The Dam - Sth Side	50	96	The Spur	90	Moonrise
54	The Broad Spur	50				- Saturday 1622
55	The Spur	50	100	'A' Saddle	100	Moonset
56	'A' Broad Saddle	50	101	The Knoll	100	- Sunday 0151
57	The Spur - SE Side	50	102	The Spur	100	
58	The Dam - Nth Side	50	103	'A' Footbridge NW end	100	Late Penalty
59	Head of the Gully	50	104	The Spur	100	
			105	The Saddle	100	10 points per minute or part minute
60	The Spur	60				
61	The Spur	60				
62	The Broad Knoll	60				
63	The Gully	60				
64	The Knoll	60				
65	'A' Knoll	60				
66	The Gully	60				
						Controls Used
						63
	Patrolled Roads: Wandering-Pingelly Rd, Noombling-Norrirne Rd, Deans Rd and others as shown on map			Water Drops: At or near controls 72, 74, 75, 76, 78		
						Total Points
						3790